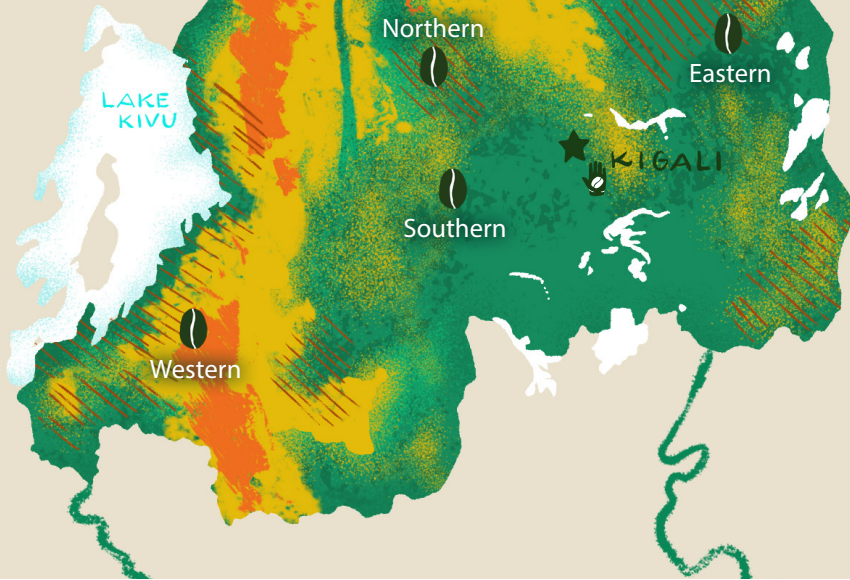


DEMOCRATIC
REPUBLIC OF
THE CONGO

UGANDA



TANZANIA

LAKE
VICTORIA

RWANDA



Rwanda is a landlocked East African country that is known as the “land of a thousand hills,” with rolling mountains, rich soils, and plentiful sunshine – all of which are ideal for growing coffee. *Arabica* coffee was introduced to Rwanda in the early 1900s by German Missionaries, but the country did not produce enough to export until decades later.

Starbucks maintains a Farmer Support Center (FSC) in the capital city of Kigali. From here, agronomists are able to work with coffee producers throughout Rwanda, as well as neighboring Burundi, Congo, Kenya, Zambia and Uganda. Starbucks works with coffee producers to help them plant disease-resistant coffee trees, improve the productivity of their farms and increase the quantity of their harvests.

ARABICA ALTITUDE
3,938 ft - 7,218 ft
(1,200 m - 2,200 m)

PRIMARY VARIETALS
Bourbon

PRIMARY PROCESSING METHODS
Washed

HARVEST
April - July

STARBUCKS

**COFFEE
ACADEMY**



Scan the QR code for more Starbucks Coffee Academy content and resources.